

**SOPHOS**

# computer **security**

SMALL BUSINESS EDITION 2

## **Network startup guide**

Document date: July 2008





# Contents

- 1 Getting started.....4
  
- Installation**
- 2 System requirements.....6
- 3 Preparing to install.....9
- 4 Installing Sophos Control Center.....12
- 5 Protecting networked computers .....15
- 6 Protecting computers that sometimes connect to your network .....20
  
- Management**
- 7 Opening Sophos Control Center.....22
- 8 Checking that computers are protected.....24
- 9 Checking when the next update is due .....25
- 10 Checking whether threats have been found.....26
- 11 Setting up email alerts.....27
- 12 Setting up scanning for potentially unwanted applications.....28
- 13 Dealing with viruses.....31
- 14 Dealing with items blocked by the firewall.....32
  
- Appendices**
- Appendix 1 Changing the download location .....34
- Appendix 2 Entering proxy details.....35
- Appendix 3 Installing an additional Sophos Control Center .....36
  
- Technical support.....39

# 1 Getting started

This guide tells you how to protect your networked computers (both Windows computers and Macs) against viruses (including spyware), potentially unwanted applications, and other security threats.

If you have computers that never connect to your network, refer also to the *Sophos Endpoint Security and Control standalone startup guide*.

If you are upgrading from Sophos Control Center 1, refer instead to the *Sophos Small Business Solutions upgrade guide*.

Documentation is published on the **User documentation** page of the **Sophos Computer Security Small Business Edition CD** and on the Sophos website ([www.sophos.com/support/docs/](http://www.sophos.com/support/docs/)).

## ***Installation***

## 2 System requirements

### 2.1 Sophos Control Center and server components

Sophos Control Center enables you to download, deploy, and manage anti-virus and firewall software.

Operating system requirements (32 bit only):

- Windows 2000 with Service Pack 3 or later
- Windows XP Professional with Service Pack 1 or later
- Windows Server 2003
- Windows Small Business Server 2003

❗ Sophos recommends that a server operating system is used (i.e. Windows 2000 Server with Service Pack 3 or later, Windows Server 2003, or Windows Small Business Server 2003). Otherwise the performance of Sophos Control Center will be impacted.

To check your version of Windows, right-click **My Computer** to display a menu, and select **Properties**.

Disk space and memory requirements:

- 1 GB of free hard disk space. To check this, open Windows Explorer, right-click **Local Disk** to display a menu, and select **Properties**.
- 256 MB of RAM. To check this, right-click **My Computer** to display a menu, and select **Properties**.

Other requirements:

- Internet connection
- Access to and from the other computers on the network

## 2.2 Sophos Anti-Virus

Operating system requirements (32 or 64 bit):

- Windows 98 SE or Me with Internet Explorer 5.5 or later
- Windows 2000 Professional or Server with Service Pack 3 or later
- Windows XP Home or Professional with Service Pack 1 or later
- Windows Server 2003
- Windows Small Business Server 2003
- Windows Vista
- Mac OS X 10.2 or later

Disk space and memory requirements:

- Windows 98 SE or Me: 90 MB of free hard disk space. Minimum 48 MB of RAM, recommended 64 MB.
- Other supported Windows versions: 120 MB of free hard disk space. Minimum 128 MB of RAM, recommended 256 MB.
- Mac OS X: 70 MB of free hard disk space. 128 MB of RAM. To check the disk space, select the hard disk, and press **⌘-I**. To check the RAM, on the Apple menu, choose **About This Mac**.

## 2.3 Sophos Client Firewall

Operating system requirements (32 bit only):

- Windows 2000 Professional
- Windows XP Home or Professional
- Windows Vista

Disk space and memory requirements:

- 100 MB of free hard disk space
- 320 MB of RAM

Other requirements:

- Sophos Client Firewall is designed to run on workstations connected to an Ethernet-based local area network or the internet.
- Sophos Anti-Virus 6 or later.

You should not install Sophos Client Firewall on the computer where Sophos Control Center is installed.

Sophos Client Firewall does not support IPv6. Sophos Client Firewall version 1 lets IPv6 packets through; Sophos Client Firewall version 1.5 either blocks all or allows all IPv6 packets depending on configuration.

## 3 Preparing to install

Before you install, you must

- ensure that you have the username and password supplied by Sophos
- remove any other vendor's anti-virus software from all computers on which you want to install Sophos Anti-Virus.

You must also do the following.

### 3.1 Windows XP with or without a service pack

- Remove any other vendor's firewall software, except Windows Firewall, from all Windows XP computers on which you want to install Sophos Client Firewall.
- Disable Simple File Sharing. To find out how to do this, refer to [www.sophos.com/support/knowledgebase/article/12837.html](http://www.sophos.com/support/knowledgebase/article/12837.html).

### 3.2 Windows XP with Service Pack 2

If Windows Firewall is turned on, and you don't intend to install Sophos Client Firewall on these computers, you must do the following.

- Enable File and Printer Sharing for Microsoft Networks.
- Add the following program exception:  
C:\Program Files\Sophos\Remote Management System\  
RouterNT.exe

To find out how to do this, refer to [www.sophos.com/support/knowledgebase/article/11075.html](http://www.sophos.com/support/knowledgebase/article/11075.html).

### **3.3 Windows Server 2003 with Service Pack 1**

If Windows Firewall is turned on, you must do the following.

- Enable File and Printer Sharing for Microsoft Networks.
- Add the following program exception:

C:\Program Files\Sophos\Remote Management System\  
RouterNT.exe

To find out how to do this, refer to

[www.sophos.com/support/knowledgebase/article/1075.html](http://www.sophos.com/support/knowledgebase/article/1075.html).

### **3.4 Windows 2000**

- Remove any other vendor's firewall software, except Windows Firewall, from all Windows 2000 computers on which you want to install Sophos Client Firewall.

### **3.5 Windows 98/Me**

- Remove any existing installation of Sophos Anti-Virus. To do this, use the Add/Remove Programs utility accessed via Windows Control Panel.

### **3.6 Windows Vista**

You can install Sophos Anti-Virus on Windows Vista computers, provided that these computers:

- meet all the system requirements for Windows 2000/XP/2003 computers (shown in section 2.2)
- meet the extra requirements below.

## Extra requirements for Windows Vista computers

- Ensure that the **Remote Registry** service is started and that its startup type is set to **Automatic**. This service is not on by default in Windows Vista. This is accessed via **Start|Control Panel|Administrative Tools|Services**. Scroll through the list of services to the **Remote Registry** service and double-click it. In the **Remote Registry Properties** dialog box, on the **General** tab, in the **Startup type** field, click the drop-down arrow and select **Automatic**. Click **Apply**. Click the **Start** button. Click **OK**.
- Turn off **User Account Control**. This is accessed via **Start|Control Panel|User Accounts|Turn User Account Control on or off**. When installation is complete, you should turn it back on.
- Open **Windows Firewall with Advanced Security**. This is accessed via **Start|Control Panel|Administrative Tools**. Change the **Inbound rules** to enable the following:

Remote Administration (NP-In)	Domain
Remote Administration (NP-In)	Private
Remote Administration (RPC)	Domain
Remote Administration (RPC)	Private
Remote Administration (RPC-EPMAP)	Domain
Remote Administration (RPC-EPMAP)	Private

When installation is complete, you should disable these again.

## 4 Installing Sophos Control Center

First you install Sophos Control Center, which enables you to download, deploy, and manage anti-virus and firewall software.

1. At the computer where you want to install this component, log on with an account that has administrative rights. This account is usually called “Administrator”.
2. Insert the **Sophos Computer Security Small Business Edition CD**. If the CD does not run automatically, at the taskbar, click **Start|Run** and enter `D:\launchcd` where `D:` is the CD drive. On the **Installation** page, click **INSTALL** to start the **Sophos Control Center - Installation Wizard**.

Alternatively, download the Sophos Control Center installation wizard from the Sophos website as follows: go to the product download page ([www.sophos.com/support/updates](http://www.sophos.com/support/updates)) and enter the username and password supplied to you by Sophos. Follow the links to download the wizard for your Sophos Small Business Solutions product, and then run it.

3. On the **Welcome** page, click **Next**.



4. On the **License Agreement** page, read the agreement. If you accept the agreement, select **I accept the terms in the license agreement** and then click **Next**.

5. On the **Destination Folder** page, you can see the folder where Sophos Control Center will be installed by default.

To accept the default, click **Next**.

If you want to use a different folder, click **Change** and browse to the folder. When you have set the new folder, click **Next**.

6. On the **Setup Type** page, ensure that **Complete** is selected, and click **Next**.

7. On the **Ready to Install the Program** page, click **Install**.

The progress of installation is displayed. Wait for installation to be completed. This can take a few minutes.

8. When installation is complete, the page below is displayed. When you click **Finish**, you are logged off automatically. If you want to log off later instead, clear the **Log off now** check box before you click **Finish**.

ⓘ Sometimes, it is necessary to restart Windows instead of simply logging off. In this case, the check box is not displayed, and a subsequent message asks you if you want to restart Windows now or later.



9. When you log on again, log on as the same user. The **Sophos network protection wizard** starts automatically (section 5).

## 5 Protecting networked computers

When you log on for the first time after installing Sophos Control Center, it is opened automatically and the **Sophos network protection wizard** starts. This wizard enables you to protect networked computers.

- ❗ To protect computers that are in a workgroup, on any Windows platform, you must first perform the additional steps mentioned in the article: <http://www.sophos.com/support/knowledgebase/article/27507.html>.

1. On the **Welcome** page, click **Next**.



2. On the **Initializing installation** page, wait while the wizard performs initial setup tasks. Then click **Next**.
3. On the **Select software** page, the Windows options are already selected.

If you don't have Windows 98/Me computers, clear the **Windows 98 and Me** check box.

If you have Macs, select the **Mac OS X** check box.

Click **Next**.

4. On the **Sophos download account details** page, enter the **Username** and **Password** that were supplied to you by Sophos.

By default, Sophos Control Center downloads the software to the C:\Program Files\Sophos\SCC\Library folder on the computer that you are currently using, and distributes it from there to other computers.

*Do you want to download the software to a different location?*

If so, refer to [appendix 1](#).

*Do you use a proxy server to connect to the internet?*

If you are not sure, open Internet Explorer. On the **Tools** menu, click **Internet Options**. On the **Connections** tabbed page, click **LAN Settings** and check whether **Use a proxy server** is selected. If so, note down the details. Then return to the wizard and refer to [appendix 2](#).

Click **Next**.

5. On the **Windows user account details** page, enter details of an account that has administrative rights, is valid on all networked computers, and can be used to install software on them. This is not the same as the Sophos account that you used earlier. In many cases, you can use the account that you logged on with before you began installation. Click **Next**.

6. The **Protect computers** page is displayed. The wizard searches for computers on which the software can be installed automatically.

❗ Only Windows 2000/XP/2003 computers are listed on this page, because automatic installation is not possible on Windows 98/Me computers or Macs.

By default, all of the computers are selected for anti-virus software. You should clear the **Anti-virus** check box next to any computer on which you don't want to install anti-virus software. To select or clear all the **Anti-virus** check boxes in the list, select or clear the check box in the **Anti-virus** column heading.

To install firewall software on a particular computer, select the **Firewall** check box next to that computer.

❗ You must restart each computer where you have installed Sophos Client Firewall, to activate the firewall.

Click **Next**.

7. On the **Download progress** page, a progress bar is displayed. Sophos Control Center downloads the software. When the download is complete, click **Next**.

8. If there are computers listed on the **Computers you must protect manually** page, click **Print** to print out the list of these computers, click **Save as** to save a copy of the list, or make a note of them. Click **Next**.

9. On the last page of the wizard, click **Finish**.

Sophos Control Center installs the software automatically on as many of the computers that you selected as possible. As anti-virus and firewall protection is applied to each computer, Sophos Control Center displays a blue computer icon next to the computer name and the **Up-to-date** column displays the word **Yes**. You will find out more about using Sophos Control Center later in this guide.

You must now install Sophos Anti-Virus and Sophos Client Firewall manually on the remaining computers (step 10).



10. Go to each of the computers on the list that you printed out or saved. Browse to the folder where Sophos Control Center makes anti-virus and firewall software and updates available. By default, the folders are:

Operating system	Folder
Windows 2000/XP/2003	\\[server name]\Sophos\SAVSCFXP
Windows 98/Me	\\[server name]\Sophos\ES9x
Mac OS X	smb://[server name]/Sophos/ESOSX

[server name] is the name of the computer where you installed Sophos Control Center. Then double-click setup.exe (on Windows) or Sophos Anti-Virus.mpkg (on Mac OS X).

- ❗ The installer for Windows 2000/XP/2003 includes options to **Remove third-party security software** and **Install Sophos NAC**. These options are not supported for small business solutions customers (users of Sophos Security Suite, Sophos Computer Security, or Sophos Anti-Virus for Small Business).
- ❗ If you are installing on Mac OS X 10.3 or later, you must copy Sophos Anti-Virus.mpkg to the Mac, and perform the installation there.

Next you protect computers that are not always on the network (section 6). If you do not need to do this, go straight to [section 7](#) to find out more about Sophos Control Center. If you want to install an additional Sophos Control Center on another computer, refer to [appendix 3](#).

## 6 Protecting computers that sometimes connect to your network

Computers that *sometimes* connect to your network (e.g. laptops that are used away from the office, but are also brought into the office) can be protected even when they are not on the network.

All computers on which you have installed anti-virus and firewall software are already configured to get their anti-virus and firewall updates directly from Sophos when they are not connected to your network.

If there are computers that sometimes connect to your network, on which you haven't yet installed anti-virus or firewall software, you should protect them the next time that they are connected to your network. This is explained in the Sophos Control Center help, in the section about protecting new computers.

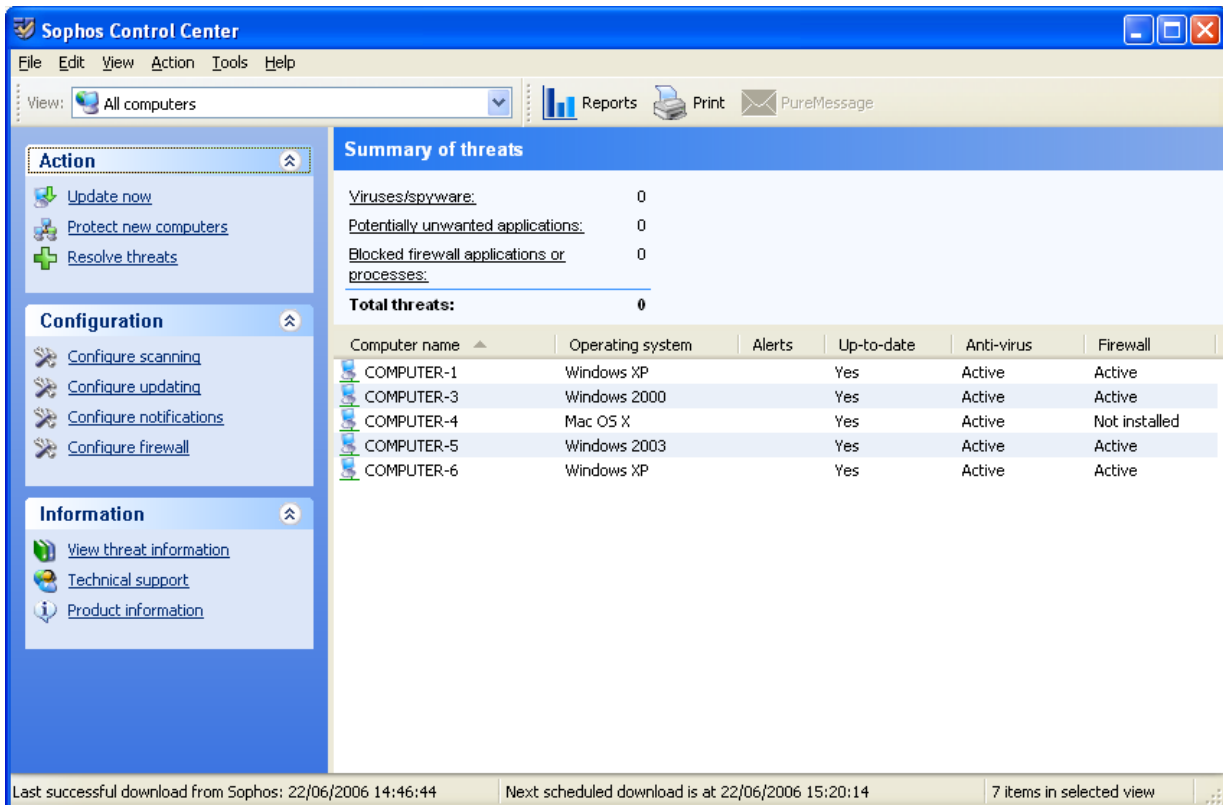
# ***Management***

## 7 Opening Sophos Control Center

You monitor the security software on your computers with Sophos Control Center.

At the taskbar, click **Start|Programs|Sophos|Sophos Control Center**.

Sophos Control Center is displayed. In the top right-hand pane, you can see a summary of any threats that have been detected, and in the bottom right-hand pane, you can see a list of the computers on your network.



The following sections tell you how to

- check that computers are protected ([section 8](#))
- check when the next update is due ([section 9](#))
- check whether threats have been found ([section 10](#))
- set up email alerts ([section 11](#))
- scan for and deal with potentially unwanted applications ([section 12](#))
- deal with viruses ([section 13](#))
- deal with items blocked by the firewall ([section 14](#)).

For more help, on the **Help** menu, click **Sophos Control Center help**.

- 💡 The **Reports** button enables you to generate reports about alerts on your network. For more information, refer to the Sophos Control Center help.
- 💡 The **PureMessage** button enables you to open the PureMessage console if it is installed on the same computer as Sophos Control Center.

## 8 Checking that computers are protected

You can check at any time that your networked computers are protected against threats.

Open Sophos Control Center and look at the list of computers.

Computer name	Operating system	Alerts	Up-to-date	Anti-virus	Firewall	Central configuration
ALPHA	Windows 2003		Yes	Active	Not installed	Ok
BRAVO	Windows XP	Error	No	Active	Active	Ok
CHARLIE	Windows 2000 ...	Application detected	Yes	Active	Not installed	Ok
DELTA	Windows 2000	Virus detected	Yes	Inactive	Inactive	Ok

In the **Up-to-date** column, the word **Yes** shows that the security software is up to date. The word **No** and a clock icon show that it is not.

To arrange the computers according to whether they are up to date or not, click the heading of the **Up-to-date** column.

If a computer is out of date, you can prompt it to update. Right-click the computer name to display a menu, and select **Update**.

In the **Anti-virus** column, the word **Active** shows that the computer is protected by on-access scanning. The word **Inactive** and a gray shield show that it is not.

- ❗ You may have chosen not to use on-access scanning on some computers (e.g. file servers). These will display the gray shield.

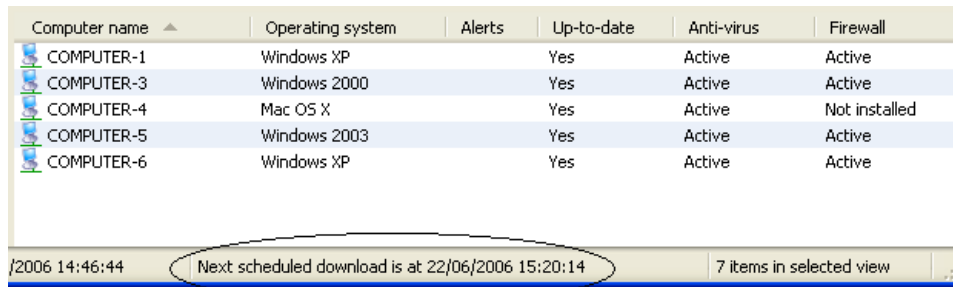
In the **Firewall** column, the word **Active** shows that the computer is protected by the firewall. The word **Inactive** and a gray wall icon show that it is not.

In the **Central configuration** column, the word **Ok** shows that the computer complies with the anti-virus, updating, and firewall configuration that is set centrally via Sophos Control Center. The word **Changed** and a yellow alert icon show that it does not. For more information about the statuses that are displayed, refer to the Sophos Control Center help.

## 9 Checking when the next update is due

You can check when your security software will next be updated from Sophos.

In Sophos Control Center, look at the status bar at the bottom of the window.



Computer name	Operating system	Alerts	Up-to-date	Anti-virus	Firewall
COMPUTER-1	Windows XP		Yes	Active	Active
COMPUTER-3	Windows 2000		Yes	Active	Active
COMPUTER-4	Mac OS X		Yes	Active	Not installed
COMPUTER-5	Windows 2003		Yes	Active	Active
COMPUTER-6	Windows XP		Yes	Active	Active

2006 14:46:44    Next scheduled download is at 22/06/2006 15:20:14    7 items in selected view

This is the time when Sophos Control Center will download any updated software to your download location. The computers on your network will update themselves from that location whenever they start and at regular intervals (by default every 5 minutes).

You can perform an update manually at any time. On the **Action** menu, click **Update now**. This causes Sophos Control Center to download any updated software to your download location and update the computers on your network.

## 10 Checking whether threats have been found

If a threat is found, Sophos Control Center displays an alert icon like this  in the **Alerts** column next to the affected computer.

A red icon means that a virus has been detected.

A yellow icon means one of the following.

- A potentially unwanted application has been detected.
- The firewall has blocked an application.
- An error has occurred.

❗ If there are multiple alerts on a computer, the icon of the alert that has the highest priority is displayed. The order of priority is as shown above, with virus alerts having the highest priority.

You can display a list of the computers that have alerts. Click the drop-down arrow on the **View** box, and select **Computers with alerts**.

Sophos Control Center can also send you alerts. Refer to [section 11](#).

## 11 Setting up email alerts

By default, desktop alerts are displayed only on the computer where the threat is found. Sophos Control Center can also send alerts to the users or computers that you choose.

1. In Sophos Control Center, on the **Action** menu, click **Configure notifications**.
2. Click the **Scanning alerts** tab. In the **Events** panel, select the threats (e.g. viruses) for which you want alerts. Then select how you want the alerts sent.

For email alerts, select the **Email** check box. Click **Configure** and enter details of your SMTP server and the SMTP “sender” address. Then click **Add** and enter the email address to which alerts will be sent.

- ❗ No email alerts are sent for items that are blocked by the firewall.

## 12 Setting up scanning for potentially unwanted applications

By default, Sophos Anti-Virus detects viruses, Trojans, spyware, and worms. You can also configure it to detect potentially unwanted applications (PUAs).

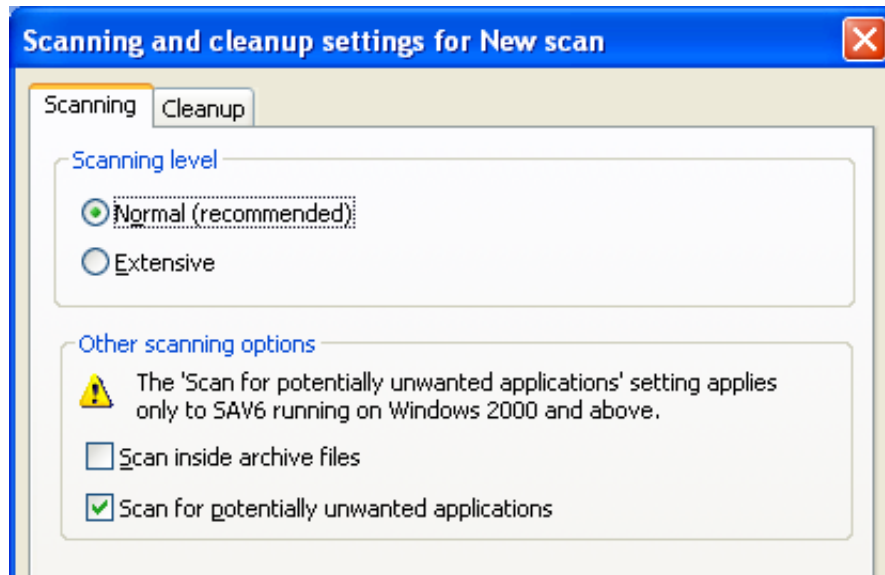
- ❗ This option applies only to Sophos Anti-Virus running on Windows 2000 or later.

Sophos recommends that you begin by using a scheduled scan to detect potentially unwanted applications. This lets you deal safely with applications that are already running on your network. You can then enable on-access scanning for potentially unwanted applications to protect your computers in future.

### 12.1 Run a scheduled scan of the computers

1. In Sophos Control Center, on the **Action** menu, click **Configure scanning**.
2. In the **Configure scanning settings** dialog box, in the **Scheduled scanning** panel, click **Add** to create a new scan, or select a scan in the list and click **Edit** to edit it.
3. In the **Scheduled scan settings** dialog box, click **Configure** (at the bottom of the page).

4. In the **Scanning and cleanup settings** dialog box, click the **Scanning** tab. In the **Other scanning options** panel, make sure that the **Scan for potentially unwanted applications** check box is selected. Click **OK**.



When the scan is carried out, Sophos Anti-Virus may report some potentially unwanted applications. You can either authorize the applications or remove them from the computers.

## 12.2 Authorize applications that you want to use

1. On the **Action** menu, click **Configure scanning**.
2. In the **Configure scanning settings** dialog box, click **Authorize applications**.
3. In the **Authorize applications** dialog box, in the **Known applications** list, select the application that you want to authorize. Click **Add** to add it to the list of authorized applications. Repeat for each application that you want to authorize. Click **OK**.
4. If you cannot see the application that you want to authorize, click **New entry**. In the **Add new application** dialog box, follow the link to Sophos's list of potentially unwanted applications. Find the application that you want to authorize and enter its name in the **Name** field. Click **OK**.

## 12.3 Clean up applications that you do not want to use

1. In the **Summary of threats** pane, click **Potentially unwanted applications**.
2. In the **Resolve alerts and errors** dialog box, select the check box for each application that you want to remove, or click **Select all**, and then click **Cleanup**.

This removes all known components of the selected applications from the selected computers. Cleanup might take some time.

There are some applications that you can't clean up using Sophos Control Center. In this case, go to the affected computer and clean up the application using Sophos Anti-Virus.

- ❗ To fully clean some applications consisting of several components from a computer, you may need to restart the computer. If this is the case, a message will appear on the affected computer, giving an option to restart the computer immediately or later. The final cleanup steps will be performed after the computer is restarted.
- ❗ To find out more about a particular application on the Sophos website, in the **Resolve alerts and errors** dialog box, click the name of the application.
- ❗ If you click **Acknowledge**, the selected applications are removed from the list. However, they are neither cleaned up nor authorized.

## 12.4 Enable on-access scanning for potentially unwanted applications

1. On the **Action** menu, click **Configure scanning**.
2. In the **Configure scanning settings** dialog box, click **On-access**. In the **On-access scan settings** dialog box, in the **Scanning options** panel, select the **Scan for potentially unwanted applications** check box. Click **OK**.

- ❗ Some applications “monitor” files and attempt to access them frequently. If you have on-access scanning enabled, it detects each access and sends multiple alerts.

## 13 Dealing with viruses

You can clean up viruses as follows.

1. In Sophos Control Center, in the **Summary of threats** pane, click **Viruses/spyware**.
2. In the **Resolve alerts and errors** dialog box, a list of infected computers, together with the virus details, is displayed. Select the viruses that you want to clean up and click **Cleanup**.

This removes the virus from the file or boot sector that has been infected. However, cleanup of documents does not repair any changes that the virus has made in the document, and cleanup of programs should be used only as a temporary measure: you should subsequently replace cleaned programs from the original disks or a clean backup. Cleanup might take some time.

There are some viruses that you can't clean up using Sophos Control Center. In this case, go to the affected computer and clean up the virus using Sophos Anti-Virus.

- ❗ Sophos recommends that before you attempt to clean multi-component threats from the computers, you run a full scheduled scan of the computers to determine all components of multi-component threats.
- ❗ To fully clean some threats consisting of several components from a computer, you may need to restart the computer. If this is the case, a message will appear on the affected computer, giving an option to restart the computer immediately or later. The final cleanup steps will be performed after the computer is restarted.
- ❗ To find out more about a particular virus on the Sophos website, in the **Resolve alerts and errors** dialog box, click the name of the virus.

## 14 Dealing with items blocked by the firewall

The firewall may block applications or processes that you decide you want to run. If so, do as follows.

1. In Sophos Control Center, in the **Summary of threats** pane, click **Blocked firewall applications or processes**.
  2. In the **Resolve alerts and errors** dialog box, a list of computers, together with the details of the items blocked, is displayed. To allow an item, select it and click **Allow**.
- ❗ If you click **Acknowledge**, the selected items are removed from the list. However, they are still blocked.

## ***Appendices***

## Appendix 1 Changing the download location

By default, Sophos Control Center downloads the software to the C:\Program Files\Sophos\SCC\Library folder on the computer that you are currently using, and distributes it from there to other computers.

You can change the folder or computer if, for example, you do not have enough disk space in the default location. You can do so using the **Sophos network protection wizard** as follows.

1. On the **Sophos download account details** page of the wizard, click **Advanced**.
2. In the **Advanced settings** dialog box, click the **Download folder** tab.
3. Click the drop-down arrow on the **Location** box, and enter the location that you want to use. The folder must be shared.
4. Enter the details for the write-access account which will be used by Sophos Control Center when placing files in the folder. You must create this account yourself.
5. Enter the details for the read-access account which will be used by each computer on the network when fetching files from the folder. You must create this account yourself.

## Appendix 2 Entering proxy details

If you use a proxy server to access the internet, you must enable Sophos Control Center to download the software via the proxy. You can do so using the **Sophos network protection wizard** as follows.

1. On the **Sophos download account details** page of the wizard, click **Advanced**.
  2. In the **Advanced settings** dialog box, click the **Proxy** tab.
  3. Select the **Access the internet via proxy** check box and enter the proxy address and port number.
  4. Type the username and password for an account that has access to the proxy.
- ❗ You can enter these details later if you want to. To do this, in Sophos Control Center, on the **Action** menu, click **Configure updating**. In the **Configure updating** dialog box, click the **Proxy** tab, and enter the details there.

## Appendix 3 Installing an additional Sophos Control Center

You can install an additional Sophos Control Center on another computer, to enable you to manage the security software remotely. You can do so using the **Sophos Control Center - Installation Wizard** as follows.

1. At the computer where you want to install this component, log on with an account that has administrative rights. This account is usually called “Administrator”.
2. Insert the **Sophos Computer Security Small Business Edition CD**. If the CD does not run automatically, at the taskbar, click **Start|Run** and enter `D:\launched` where `D:` is the CD drive. On the **Installation** page, click **Additional installation options** and then click **Install an additional Sophos Control Center**. Click **INSTALL** to start the **Sophos Control Center - Installation Wizard**.

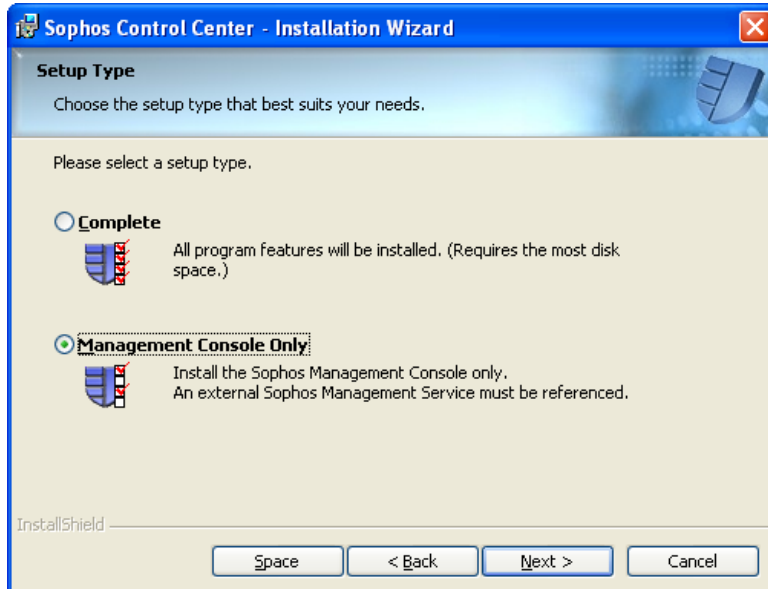
Alternatively, run the Sophos Control Center installation wizard that you downloaded from the Sophos website in [section 4](#).

3. On the **Welcome** page, click **Next**.
4. On the **License Agreement** page, read the agreement. If you accept the agreement, select **I accept the terms in the license agreement** and then click **Next**.
5. On the **Destination Folder** page, you can see the folder where Sophos Control Center will be installed by default.

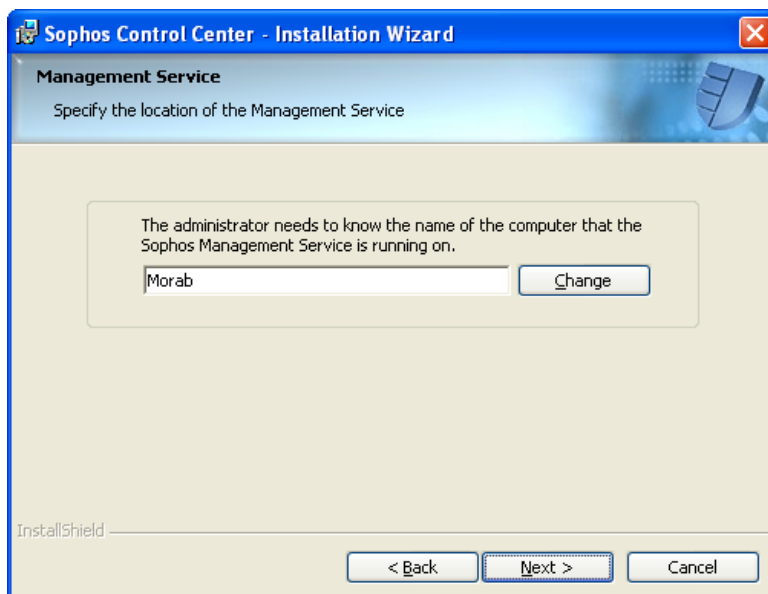
To accept the default, click **Next**.

If you want to use a different folder, click **Change** and browse to the folder. When you have set the new folder, click **Next**.

6. On the **Setup Type** page, click **Management Console Only**, and then click **Next**.



7. On the **Management Service** page, you can see the name of the computer where Sophos Management Service is running (usually the computer where Sophos Control Center is installed). You can change the name of the computer by clicking **Change**, and browsing to the computer. Click **Next**.



8. On the **Ready to Install the Program** page, click **Install**.

The progress of installation is displayed. Wait for installation to be completed. This can take a few minutes.

9. When installation is complete, the page below is displayed. When you click **Finish**, you are logged off automatically. If you want to log off later instead, clear the **Log off now** check box before you click **Finish**.

- ⓘ Sometimes, it is necessary to restart Windows instead of simply logging off. In this case, the check box is not displayed, and a subsequent message asks you if you want to restart Windows now or later.



## Technical support

For technical support, visit [www.sophos.com/support](http://www.sophos.com/support). If you contact technical support, provide as much information as possible, including the following:

- Sophos software version number(s)
- Operating system(s) and patch level(s)
- The exact text of any error messages

Copyright 2006–2008 Sophos Group. All rights reserved. No part of this publication may be reproduced, stored in a retrieval system, or transmitted, in any form or by any means, electronic, mechanical, photocopying, recording or otherwise unless you are either a valid licensee where the documentation can be reproduced in accordance with the licence terms or you otherwise have the prior permission in writing of the copyright owner.

Sophos and Sophos Anti-Virus are registered trademarks of Sophos plc and Sophos Group. All other product and company names mentioned are trademarks or registered trademarks of their respective owners.

## Copyright and licensing information for ACE™, TAO™, CIAO™, and CoSMIC™

ACE<sup>1</sup>, TAO<sup>2</sup>, CIAO<sup>3</sup>, and CoSMIC<sup>4</sup> (henceforth referred to as “DOC software”) are copyrighted by Douglas C. Schmidt<sup>5</sup> and his research group<sup>6</sup> at Washington University<sup>7</sup>, University of California<sup>8</sup>, Irvine, and Vanderbilt University<sup>9</sup>, Copyright ©1993–2005, all rights reserved.

Since DOC software is open-source<sup>10</sup>, free software, you are free to use, modify, copy, and distribute—perpetually and irrevocably—the DOC software source code and object code produced from the source, as well as copy and distribute modified versions of this software. You must, however, include this copyright statement along with code built using DOC software.

You can use DOC software in commercial and/or binary software releases and are under no obligation to redistribute any of your source code that is built using DOC software. Note, however, that you may not do anything to the DOC software code, such as copyrighting it yourself or claiming authorship of the DOC software code, that will prevent DOC software from being distributed freely using an open-source development model. You needn’t inform anyone that you’re using DOC software in your software, though we encourage you to let us<sup>11</sup> know so we can promote your project in the DOC software success stories<sup>12</sup>.

DOC software is provided as is with no warranties of any kind, including the warranties of design, merchantability, and fitness for a particular purpose, noninfringement, or arising from a course of dealing, usage or trade practice. Moreover, DOC software is provided with no support and without any obligation on the part of Washington University, UC Irvine, Vanderbilt University, their employees, or students to assist in its use, correction, modification, or enhancement. A number of companies<sup>13</sup> around the world provide commercial support for DOC software, however. DOC software is Y2K-compliant, as long as the underlying OS platform is Y2K-compliant.

Washington University, UC Irvine, Vanderbilt University, their employees, and students shall have no liability with respect to the infringement of copyrights, trade secrets or any patents by DOC software or any part thereof. Moreover, in no event will Washington University, UC Irvine, or Vanderbilt University, their employees, or students be liable for any lost revenue

or profits or other special, indirect and consequential damages.

The ACE<sup>14</sup>, TAO<sup>15</sup>, CIAO<sup>16</sup>, and CoSMIC<sup>17</sup> web sites are maintained by the DOC Group<sup>18</sup> at the Institute for Software Integrated Systems (ISIS)<sup>19</sup> and the Center for Distributed Object Computing of Washington University, St. Louis<sup>20</sup> for the development of open-source software as part of the open-source software community<sup>21</sup>. By submitting comments, suggestions, code, code snippets, techniques (including that of usage), and algorithms, submitters acknowledge that they have the right to do so, that any such submissions are given freely and unreservedly, and that they waive any claims to copyright or ownership. In addition, submitters acknowledge that any such submission might become part of the copyright maintained on the overall body of code, which comprises the DOC software. By making a submission, submitter agree to these terms. Furthermore, submitters acknowledge that the incorporation or modification of such submissions is entirely at the discretion of the moderators of the open-source DOC software projects or their designees.

The names ACE, TAO, CIAO, CoSMIC, Washington University, UC Irvine, and Vanderbilt University, may not be used to endorse or promote products or services derived from this source without express written permission from Washington University, UC Irvine, or Vanderbilt University. Further, products or services derived from this source may not be called ACE, TAO, CIAO, or CoSMIC nor may the name Washington University, UC Irvine, or Vanderbilt University appear in their names, without express written permission from Washington University, UC Irvine, and Vanderbilt University.

If you have any suggestions, additions, comments, or questions, please let me<sup>22</sup> know.

Douglas C. Schmidt<sup>23</sup>

The ACE home page is  
<http://www.cs.wustl.edu/ACE.html>

## References

1. <http://www.cs.wustl.edu/~schmidt/ACE.html>
2. <http://www.cs.wustl.edu/~schmidt/TAO.html>
3. <http://www.dre.vanderbilt.edu/CIAO/>
4. <http://www.dre.vanderbilt.edu/cosmic/>
5. <http://www.dre.vanderbilt.edu/~schmidt/>

6. <http://www.cs.wustl.edu/~schmidt/ACE-members.html>
7. <http://www.wustl.edu/>
8. <http://www.uci.edu/>
9. <http://www.vanderbilt.edu/>
10. <http://www.the-it-resource.com/Open-Source/Licenses.html>
11. [mailto:doc\\_group@cs.wustl.edu](mailto:doc_group@cs.wustl.edu)
12. <http://www.cs.wustl.edu/~schmidt/ACE-users.html>
13. <http://www.cs.wustl.edu/~schmidt/commercial-support.html>
14. <http://www.cs.wustl.edu/~schmidt/ACE.html>
15. <http://www.cs.wustl.edu/~schmidt/TAO.html>
16. <http://www.dre.vanderbilt.edu/CIAO/>
17. <http://www.dre.vanderbilt.edu/cosmic/>
18. <http://www.dre.vanderbilt.edu/>
19. <http://www.isis.vanderbilt.edu/>
20. <http://www.cs.wustl.edu/~schmidt/doc-center.html>
21. <http://www.opensource.org/>
22. <mailto:d.schmidt@vanderbilt.edu>
23. <http://www.dre.vanderbilt.edu/~schmidt/>